

# Needle Valve - Sub-plate mounting, Model : MHNL



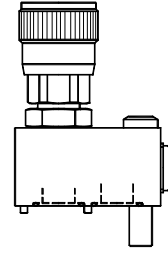
the right connection  
the right environment

Ref. No : H02758, Release March 2018 (Dimensions in mm)

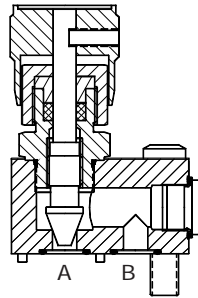
## Description

Needle valves model MHNL are rising spindle, seat type valves with taper needle construction.

The mounting interface conforms to Factory standard.



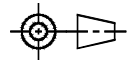
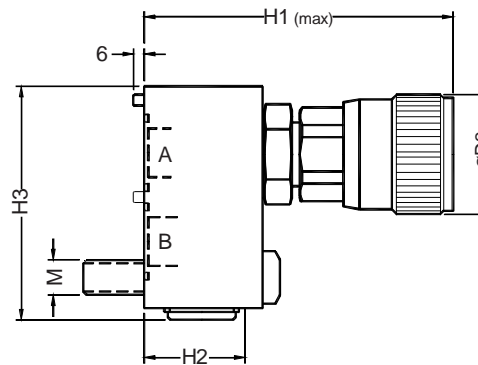
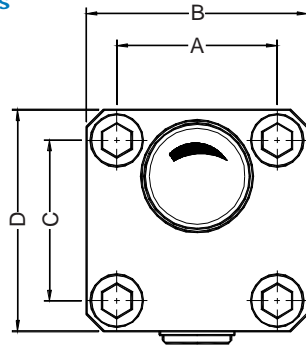
## Section



Hydraulic Symbol

## Unit Dimensions

Valve



Model Code	A	B	C	D	H1	H2	H3	ØD2	Valve fixing screws (10.9)	
									M	Tightening Torque
MHNL11-2.0	47.8	65	60.5	78	116.0	33.0	79	37	M10x50L	16Nm
MHNL19-2.0	65.0	97	81.0	113	140.0	22.2	118	48	M16x50L	117Nm
MHNL28-2.0	92.0	127	92.0	127	156.5	58.0	131	68	M20x90L	238Nm

## Unit Dimensions

- Construction . . . . . Seat type.
- Mounting type . . . . . Sub-plate mounting type.
- Interface . . . . . Factory standard.
- Flow direction . . . . . From port `A' to port `B'.
- Operating pressure . . . . . 350 bar.
- Hydraulic medium . . . . . Mineral oil.
- Viscosity range . . . . . 10 cSt to 380 cSt.
- Fluid temperature range . . . . . -20 °C to +70 °C
- Fluid cleanliness requirement . . . . . As per ISO 19/16 or better.
- Mass . . . . .
  - MHNL11-2.0 - 1.5 kg.
  - MHNL19-2.0 - 3.6 kg.
  - MHNL28-2.0 - 8.5 kg.
- Maximum flow handling capacity . . . . . Refer graph.

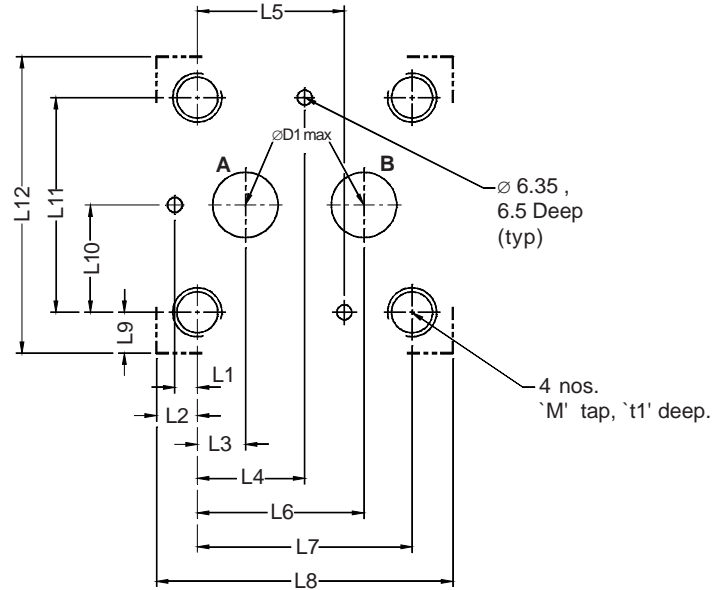
# Needle Valve - Sub-plate mounting, Model : MHNL



the right connection  
the right environment

Ref. No : H02758, Release March 2018 (Dimensions in mm)

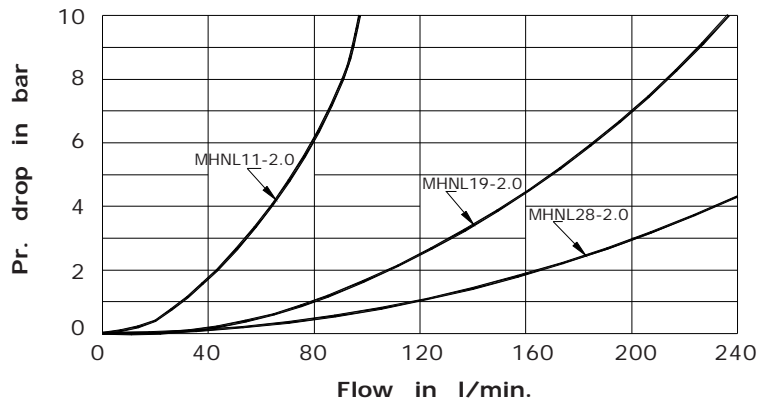
## Interface - Factory standard



Model Code	$\varnothing D1$	L1	L2	L3	L4	L5	L6	L7	L8	L9	L10	L11	L12	M	t1
MHNL11-2.0	11.0	--	8.6	12.7	30.3	47.8	47.8	60.5	78	8.6	23.9	47.8	65	M10	15
MHNL19-2.0	19.0	8.70	16.0	22.2	40.5	--	68.3	81.0	113	16.0	32.5	65.0	97	M16	24
MHNL28-2.0	28.0	9.65	17.5	20.6	46.0	--	71.4	92.0	127	17.5	46.0	92.0	127	M20	30

## Performance Curves

Oil used : ISO VG 68,  
Viscosity : 68 cSt @ 40 °C  
Test conducted at : 50 °C.



## Ordering Code

